

Important safety

Please read carefully

Please retain instructions for future reference.

SAFETY INSTRUCTIONS

- When using electrical appliances, basic safety precautions should always be followed.
- This appliance can be used by children aged from 8 years and above and persons with reduced physical, sensory or mental capabilities and knowledge, if they have been supervised/instructed and understand the hazards involved.
- Children shall not play with the appliance.
- Children should not perform cleaning or user maintenance, unless they are older than 8 and supervised.
- This appliance is not a toy.
- If the power supply cord, plug or any part of the appliance is malfunctioning or if it has been dropped or damaged, cease using the product immediately to avoid potential injury.
- This appliance contains no user serviceable parts, only a qualified electrician should carry out repairs. Improper repairs may place the user at risk of harm.
- Keep the appliance and its power supply cord out of the reach of children.
- Keep the appliance out of the reach of children when it is switched on or cooling down.
- Keep the appliance and its power supply cord away from heat or sharp edges that could cause damage.
- Keep the appliance away from other heat emitting appliances.
- Keep the appliance free from dust, lint, hair or anything that may reduce the airflow of the appliance.
- Do not immerse the electrical components of the appliance in water or any other liquid.
- Do not operate the appliance with wet hands or if any connections are wet.
- Do not expose the appliance to rain.
- Do not leave the appliance unattended whilst connected to the mains power supply.
- Do not remove from the mains power supply by pulling the cord; switch off and remove the plug by hand.
- Do not pull or carry the appliance by its power supply cord.
- Do not use the appliance if it has been dropped or if there are visible signs of damage.
- Do not use the appliance for anything other than its intended use.
- Do not use any parts/accessories other than the parts supplied with this appliance, as this may cause damage.
- Do not use this appliance outdoors.
- Do not store the appliance in direct sunlight or in high humidity conditions.
- Do not use this appliance if any of the openings are blocked.
- Do not use the appliance to pick up flammable liquid, matches, cigarette ends, hot ashes or any hot, burning or smoking objects.
- Do not use this appliance to pick up hard, sharp objects, such as glass or nails etc.
- Do not use the appliance to pick up water or any other liquid, as this poses risk of an electric shock.
- Take care when equipping accessories with rotating parts, as this could cause entrapment.
- Use of an extension cord with the appliance is not recommended.
- This appliance should not be operated by means of an external timer or separate remote control system.
- This appliance is intended for domestic use only. It should not be used for commercial purposes.

**UK
CA CE**

EN | Disposal of Waste Batteries and Electrical and Electronic Equipment



This product is labelled with this crossed out wheel bin symbol in accordance with European Directive 2012/19/EC to indicate that it must not be disposed of with your other household waste. Due to the presence of hazardous substances, mixtures or components, electrical and electronic devices that are not subject to selective sorting are potentially dangerous to the environment and human health. Please check your local city office or waste disposal service for the return and recycling of this product.

Manufactured by:
Ultimate Products UK Ltd.,
Victoria Street, Manchester OL9 0DD. **UK.**
Ultimate Products Europe Ltd.,
19 Baggot Street Lower, Dublin D02 X658. **ROI.**

MADE IN CHINA.

CD151124/MD000000/V1

It is recommended to clean the filters once every fortnight, depending on use.

WARNING: Do not reassemble or use the vacuum cleaner until the removable filter is fully dry, as this could cause damage.



Troubleshooting

Problem	Possible cause	Solution
The suction is poor.	The accessory or air inlet is blocked.	Disconnect the accessory and clear the blockage.
	The dust container is almost full.	Empty the dust container following the instructions in the section entitled ' Emptying the dust container '.
	The filters are blocked.	Clean the filters following the instructions in the section entitled ' Cleaning the washable and sponge filters '.
The vacuum cleaner has stopped working.	The thermal cut-out device has activated due to restricted airflow and has cut power to the motor to protect the vacuum cleaner.	Turn off and disconnect the vacuum cleaner from the mains power supply. Empty the dust container and clean the washable filter. Allow the vacuum cleaner to cool for 1 hour.

Storage

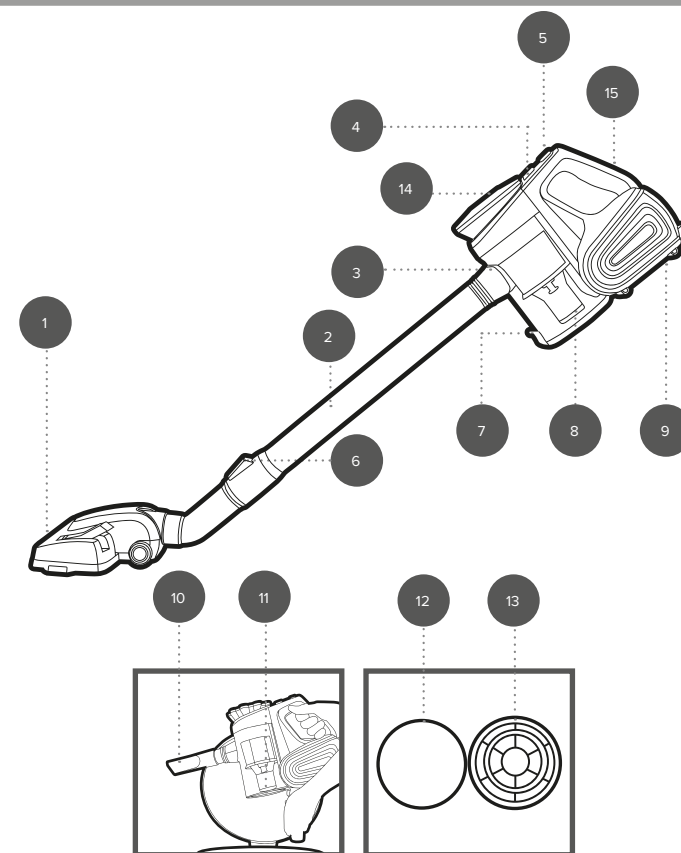
Ensure that the vacuum cleaner is cool, clean and dry. Do not wrap the cord around the vacuum cleaner, as this could cause damage. Store in a cool, dry place.

Specifications

Product code: KL01731
Input: 220–240 V ~ 50/60 Hz
Output: 600 W

User manual

Vacuum cleaner



1. Floor brush
2. Telescopic extension tube
3. Air inlet
4. Dust container release button
5. Power button
6. Telescopic extension tube button
7. Dust container base release latch
8. Cyclonic clone
9. Vacuum cleaner main body
10. Crevice and dusting tool
11. 600 ml removable dust container
12. Sponge filter
13. Washable filter
14. Top cover
15. Handle

Manufactured by:
Ultimate Products UK Ltd.,
Victoria Street, Manchester OL9 0DD. **UK.**
Ultimate Products Europe Ltd.,
19 Baggot Street Lower, Dublin D02 X658. **ROI.**

MADE IN CHINA.

CD060225/MD000000/V1

Please retain instructions for future reference.

Dos and don'ts

DO:

Check that the voltage indicated on the rating plate corresponds with that of the local network before connecting the vacuum cleaner to the mains power supply.

Keep the vacuum cleaner away from heat or sharp edges that could cause damage.

Switch off the vacuum cleaner before changing or fitting attachments.

DON'T:

Use attachments if they are loose, damaged or broken.

Immerse the extension tube in water.

Use the vacuum cleaner without the filter and filter cone in position.

Thermal cut-out device

The handle of the vacuum cleaner may get warm during use: this is normal. If the dust container and washable filter are not cleaned on a regular basis, the vacuum cleaner may overheat. This will cause the thermal cut-out device to activate due to restricted flow of air around the unit. If the vacuum cleaner cuts out, press the power switch to turn it off and unplug it from the mains power supply. Proceed to empty the dust container, clean the washable filter and allow the vacuum cleaner to cool for approx. 60 minutes.



NOTE: Due to the high suction of the vacuum cleaner, the floor brush may encounter resistance during use on high pile carpets. This is normal.

Care and maintenance

Always unplug the vacuum cleaner from the mains power supply before attempting any cleaning or maintenance.

Wipe the external surface of the vacuum cleaner with a soft, damp cloth and allow to dry thoroughly.

Do not use any harsh or abrasive detergents or cleaning agents to clean any part of the vacuum cleaner.

Clean the washable filter every two weeks.

To clean the inside of the dust container it is possible to remove the cyclonic cone.

Instructions for use

Before first use

Before using the vacuum cleaner for the first time, wipe it with a soft, damp cloth and dry thoroughly.

Do not immerse the vacuum cleaner in water or any other liquid.

Using the vacuum cleaner

STEP 1: Plug in and switch on the vacuum cleaner at the mains power supply.

STEP 2: Turn on the vacuum cleaner by pressing the power button. To turn off, press the power button again.



NOTE: The vacuum cleaner comes preassembled. If disassembled due to cleaning, ensure that the vacuum cleaner is switched off and unplugged from the mains power supply before refitting any accessories onto the air inlet.



CAUTION: Do not use the vacuum cleaner on any loose threads that can get caught and pulled.



WARNING: Do not use the vacuum cleaner without the washable filter, sponge filter, dust container or cyclonic cone in position. Ensure that both filters and the dust container are regularly cleaned to preserve the suction and prolong the life of the vacuum cleaner.

Using the telescopic extension tube

The floor brush, crevice and dusting tool and floor brush fit onto the telescopic extension tube to afford a more accessible and convenient clean.

STEP 1: Fit the telescopic extension tube onto the air inlet.

STEP 2: Adjust the height of the telescopic extension tube if necessary by pressing the telescopic extension tube button and lift or lower the tube.

STEP 3: Push the floor brush or crevice and dusting tool onto the end of telescopic extension tube and secure into place.

STEP 4: Turn on the vacuum cleaner by pressing the power button.

Using the floor brush

STEP 1: Fit the telescopic extension tube onto the air inlet.

STEP 2: Push the floor brush onto the end of the telescopic extension tube and secure into place.

STEP 3: Adjust the telescopic extension tube to the required length by pressing the telescopic extension tube button down and sliding the inner tube out.

STEP 4: Turn on the vacuum cleaner by pressing the power button.

Using the crevice and dusting tool

The crevice and dusting tool is ideal for removing dust and dirt from folds in fabrics, radiators, corners, recesses and other places that are hard to reach, as well as for removing dust and dirt from shelves, cupboards and windowsills. Select the desired function by pressing the catch on the tool, sliding the brush upwards for the dusting brush, and downwards for the crevice tool.

STEP 1: Push the crevice and dusting tool directly onto the end of the telescopic extension tube or the end of the air inlet.

STEP 2: Turn on the vacuum cleaner by pressing the power button.

STEP 3: To remove the crevice and dusting tool, turn off the vacuum cleaner by pressing the power button and then pull the crevice tool firmly from the end of the relevant attachment.

Emptying the dust container

Do not use the vacuum cleaner if the dust container is filled past the max. fill mark, as this could damage the vacuum cleaner or cause injury to the user.

Before emptying the dust container, ensure that the vacuum cleaner is switched off and unplugged from the mains power supply. It is recommended to empty the dust container outdoors.

STEP 1: Whilst securely holding the vacuum cleaner main unit, remove the dust container by pressing the dust container release button and pulling it away from the vacuum cleaner.

STEP 2: Holding the dust container over a bin or refuse bag, pull the dust container base release catch to open the dust container. Empty the dust container slowly and carefully to reduce the amount of dust released back into the atmosphere.

STEP 3: To close the dust container, push the base closed until it locks into position.

STEP 4: Replace the dust container by aligning the slot on the dust container with the clip on the vacuum cleaner main unit and then push it in until it locks into position.



NOTE: The cyclonic cone can be removed from the dust container for easier cleaning. Do not use the vacuum cleaner if the dust container is filled past the max. fill mark, as this could damage the vacuum cleaner or cause injury to the user.

Cleaning the washable and sponge filters

The filters can only be accessed when the dust container has been removed.

STEP 1: Remove the dust container by following the instructions in the section entitled 'Emptying the dust container'.

STEP 2: Once the dust container is empty, remove the dust container lid by twisting the lid in an anticlockwise direction, then lifting it away from the dust container.

STEP 3: Rotate the filter in a clockwise direction and pull it out of the cyclonic cone by the handle.

STEP 4: Turn the filter over and remove the sponge filter from inside the washable filter.

STEP 5: Shake both filters until most of the dust has been removed, then rinse under clean, warm water and allow to dry naturally.

STEP 6: Once the filters have fully dried, place the sponge filter back inside the washable filter, and slot the washable filter back into the cyclonic cone, rotating it in a anticlockwise direction to lock it back into position.

STEP 7: Reattach the lid to the dust container by aligning the unlock symbol on the lid with the vertical arrow on the rear of the dust container, then twist in a clockwise direction to lock it securely in place.



NOTE: Do not use the vacuum cleaner unless the lid is securely in place. Do not clean the filter using detergents or use external heat sources such as radiators to dry the filter.